



Sun Lane

Harpenden, AL5 4EG

Spacious one bedroom apartment - with a terrace to the rear - on the ground floor of this ever popular over 55s development. Allocated parking space, plus visitors parking. There is a Residents Lounge and communal gardens. Arcadian Court is next to Lydekker Park and within a few minutes walk of the town centre. Lease 95 years remaining. *CHAIN FREE*

Guide price £395,000

Sun Lane

Harpenden, AL5 4EG



- Ground floor apartment
- Recently refurbished Kitchen
- Next to Lydekker Park
- Terrace to the rear
- Allocated parking plus visitors parking
- Moments from town centre
- Open plan living space
- Residents Lounge & communal gardens

Entrance Hall

Living Room

18'2" x 15'4" (5.56 x 4.68)

Kitchen

10'9" x 8'1" (3.29 x 2.48)

Cloakroom

Bedroom

13'3" x 8'11" (4.05 x 2.74)

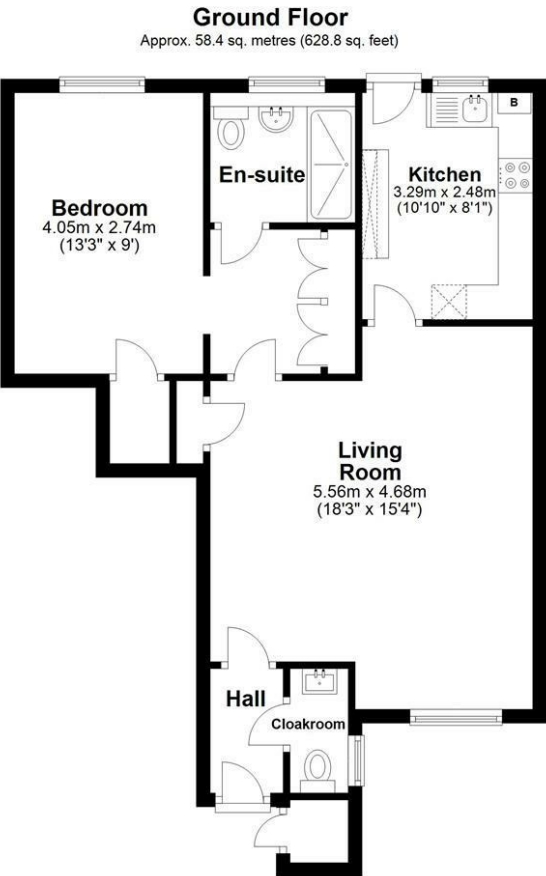
Dressing / Wardrobe Area

Shower Room





Floor Plan



Total area: approx. 58.4 sq. metres (628.8 sq. feet)
Sketch layout only. Not to scale. Plan produced for Whittaker & Co.

Plan produced using PlanUp.

These particulars, whilst believed to be accurate are set out as a general outline only for guidance and do not constitute any part of an offer or contract. Intending purchasers should not rely on them as statements of representation of fact, but must satisfy themselves by inspection or otherwise as to their accuracy. No person in this firms employment has the authority to make or give any representation or warranty in respect of the property.

